

# City of Portage Park & Recreation



Spring/Summer 2026

# Activity Guide

[portage.recdesk.com](http://portage.recdesk.com)

608.742.2178

401 Cemetery Road



# TABLE OF CONTENTS

---

**01** DEPARTMENT INFO

**02** EMPLOYMENT

**02** REGISTRATION &  
RESERVATION INFO

**03** PARK HIGHLIGHTS

**03** DISCOUNT TICKETS

**04** SPRING PROGRAMS

**05** SUMMER PROGRAMS

**09** SPORTS CAMPS

**10** ADULT PROGRAMS

**12** COMMUNITY EVENTS

**14** AROUND PORTAGE

**16** MEMORIAL PROGRAM

**16** WINTER STORAGE

**17** FACILITY RENTALS

**18** 2025 SPONSORS

# DEPARTMENT INFO

**Toby Monogue**  
Department Manager

**Mike Percy**  
Recreation Coordinator

**Hayley Wolfe**  
Recreation Assistant

**Mark Fahey**  
Parks Crewperson

**Justin Brown**  
Parks Crewperson

**Chris Sheskey**  
Parks Crewperson

**Employment Opportunities-** Persons interested in obtaining part-time or seasonal employment with the Portage Park & Recreation Department should visit the next page, go on our website, or contact our department for information about open positions.

**Everyone is Welcome-** We welcome anyone to participate in our programs regardless of ability, race, or gender. We want to encourage everyone to participate and join in on the fun!

**You Snooze....You Lose-** Nothing kills a program quicker than waiting until the last minute to register. If we do not meet the minimum number of participants by the registration deadline, the program will be canceled. We also set registration maximums on each program based on staff, equipment, and space, so be sure to register early in order to reserve your spot before they are all gone!

**Smile! -** For program promotional purposes, photographs may be taken of participants. If you do not wish to have your photo, or photos of your children taken, please notify our department.

**Residents vs. Non-Residents-** All program and park shelter rentals will list 2 prices under the description. (Ex: \$15/\$25). The first price is the City of Portage and Pacific Township residents. The second price is for non-residents (Lewiston, Caledonia, Fort Winnebago, Pardeeville, etc.). Non-resident fees are charged to help our department continue to maintain our programs and facilities for those who do not pay taxes to the City of Portage.

**Scholarships-** The City of Portage wishes to offer our programs and activities to all area children. If financial assistance is needed for a child's participation, please contact our department for more information. Park Shelter Rentals, select programs, and special events/tickets do not qualify for our scholarship program.


**Typos/Mistakes-** Occasionally, there may be an error in days, times, registration requirements, pricing, or location in our program descriptions. When such errors occur, our staff will do everything possible to correct the situation promptly. Our department reserves the right to change program schedules as needed to accommodate demand or school/community conflicts.

**Program Refund Policy-** Refunds will be granted if requests are made seven (7) days before the scheduled start of the activity. Please contact our department if you have questions regarding refunds due to medical or unavoidable circumstances. All refunds carry a \$5.00 processing fee.

**Facility Rental Refund Policy-** Refunds for facility rentals will be granted if requests are made thirty (30) days prior to scheduled rental. Extenuating circumstances are occasionally considered. Refunds requested due to poor weather on your rental day will not be granted. All refunds carry a \$5.00 processing fee.

 **NEW**  
**401 Cemetery Rd**  
**Portage, WI 53901**

[portage.recdesk.com](http://portage.recdesk.com) 

 **(608) 742-2178**

[facebook.com/  
portageparknrec](https://facebook.com/portageparknrec) 

# EMPLOYMENT

Applications and additional information about our Employment Opportunities can be found under the 'Employment' tab on our website: [portage.recdesk.com](http://portage.recdesk.com).

[Interviews for positions begin in April, so be sure to submit applications ASAP](#)

Drop off completed applications at 401 Cemetery Road or email to [mike.percy@portagewi.gov](mailto:mike.percy@portagewi.gov)

## YOUTH SPORTS SUPERVISOR

Help supervise our Youth and Tot Sports programs this summer! You'll teach kids the basics of various sports with the assistance of our teenage staff members. Must be 18+ and have prior experience working with kids. Starting pay at \$18+ per hour.

## YOUTH SPORTS STAFF

Join our team to help coach and teach kids the basics of different sports in our Youth and Tot Sports programs. Must be 14+ to apply. Starting pay at \$11/hour.

## ADULT FITNESS INSTRUCTORS

We are seeking instructors to expand our adult fitness program offerings! Applicants must have previous experience teaching or leading fitness classes. If you are interested in learning more, please reach out to our department to discuss.

## SEASONAL PARK MAINTENANCE WORKER

This is a non-supervisory position. General job function is to efficiently and effectively perform maintenance operations; including operating machinery and performing maintenance and cleaning tasks throughout the City's parks and facilities. Must be 16 to apply.

- Monday-Friday 7:30 am-3:30 pm / Some Saturday AM hours
- 20-40 hours per week, depending on availability
- Starts mid-May, working though mid-August (start date may be flexible)
- Pay \$16/hour
- Position will be filled as soon as possible, so apply today!



# REGISTRATIONS & RESERVATIONS

There are 3 easy ways to register for a program or reserve a park shelter for your next event. We accept cash, check, or credit card for registrations and reservations. All Mail-In or Drop Off payments must be made with cash or check only. We do not offer over-the-phone registrations or reservations due to liability waivers that must be signed at the time of reservation.

### Online

([portage.recdesk.com](http://portage.recdesk.com))  
Create an account on our website to sign up for programs or reserve a park shelter. You will need a credit card to complete any online transaction. A small convenience fee will apply.

### Mail-In or Drop Off

Mail-in or Drop Off registration is available for all programs and shelter rentals. All Mail-In and Drop Off registrations or reservations must have completed paperwork and payment included in envelope. Drop Offs can be placed in our secure drop box outside of our office front door.

### In-Person

Check our website or Facebook page for office hours, or call ahead to make sure we are accepting in-person registrations & reservations



# PARK HIGHLIGHTS

## SILVER LAKE BEACH

Enjoy this FREE sandy beachfront with dedicated swimming area and fishing piers! This beach is SWIM AT YOUR OWN RISK. Open during park hours, 8am-10pm daily.



## GOODYEAR PARK SKATE PARK & SPLASH PAD

Goodyear Park is home to both a splashpad and a skate park in Portage. These facilities are free to use. This park also offers a park shelter and bathrooms. Splash pad is open 10:30am-6:30pm, Memorial Day through Labor Day. The skate park is open daily from 8am till dusk.



## DOG PARKS

Portage will have 2 dog parks available for dogs to run and play at in 2026! The Fritz Port dog park is located at the Portage Fairgrounds on the south end of town. The Rolling Prairie Conservancy dog park is located on the north side of town in the new Rolling Prairie subdivision, off of Gunderson Drive, and will be opening in the summer of 2026. Residents who have their dog registered with the City of Portage in 2026 have admission to both dog parks included in that annual fee. Non-residents are required to pay the daily fee at the park, or purchase an annual dog park pass at City Hall.

## FOX RIVER LANDING

The City of Portage recently installed an ADA accessible kayak and canoe launch on the Fox River at Fox River Landing (1825 State Hwy 33). Parking and use of the launch is free.



# DISCOUNT TICKETS

Our department receives discounted tickets to local attractions through our state-wide Wisconsin Park & Recreation Association (WPRA). Tickets are available to purchase in-person at the Portage Park & Rec Office (401 Cemetery Rd) May 4th thru August 28th.



**Cash or card accepted. No checks. Please call ahead to check availability.**

### MILWAUKEE COUNTY ZOO

Price: \$15.50 Adult (13+)  
\$12.50 Child (3-12)  
Children 2 & under are FREE  
Open year-round. Tickets expire 12/31/26

### JET BOAT ADVENTURE

Price: \$34.00 Adult (12+)  
\$19.00 Child (4-11)  
Children 3 and under not allowed  
Season: May 9–October 11

### ORIGINAL WISCONSIN DUCKS

Price: \$34.00 Adult (12+)  
\$19.00 Child (4-11)  
Children 3 & under are FREE  
Season: March 7–Mid November

### UPPER DELLS BOAT TOUR

Price: \$34.00 Adult (12+)  
\$19.00 Child (4-11)  
Children 3 & under are FREE  
Season: March 14–November 1

### PIRATES COVE MINI GOLF

Price: \$9.00 per person  
Children 4 & under are FREE  
Season: Mid-March thru Mid-October  
Only playing players allowed on course

### MOUNT OLYMPUS

Water & Theme Park)  
Season: May 22–September 7  
Price: \$17.75 per person  
Kids 2 and under are FREE

### NOAH'S ARK

Price: \$37.35 per person  
Children under 36" are FREE  
Season: May 23–September 7

### LAND OF NATURA

Price: \$20.00  
Season: May–September

# SPRING PROGRAMS

## KARATE

Check out our popular youth Karate program! We have 3 levels to choose from, so that each individual will learn and be challenged by others with similar skills and experience. Participants can sign up for any session, without participating in the previous session.

- **Basics-** Join in on the fun and join our martial arts program! Karate Basics is an intro level class and will introduce participants to the fundamental skills of the martial arts world. This class is designed for inexperienced, new karate participants.
- **Intermediate-** This is for our mid-level karate participants and will help build and improve the participants' skills and knowledge. This program is designed for participants who have experience in our karate programs.
- **Advanced-** This program is designed for more experienced karate participants. This advanced program will expand and develop participants' knowledge and skills in martial arts. Karate Advanced participants must have a Green Belt or higher in order to register.

**Dates:** Monday & Thursday evenings  
-Session 3 (Apr. 27-June 18)  
-Session 4 (June 25-Aug 13)  
-Session 5 (Aug 20-Oct 12)  
-Session 6 (Oct 19-Dec 10)

**Ages:** 6 and older

**Times:** Basics (5pm-6pm)  
Intermediate (6pm-7pm)  
Advanced (7pm-8pm)

**Location:** Portage Park & Rec Community Room (401 Cemetery Rd)

**Fees:** \$40 Resident / \$50 Non-Resident  
(per session = 15 classes)

## FLAG FOOTBALL

Back again is our popular Spring Flag Football program! Kids will learn and practice the basics of throwing, catching, and playing games. We will start with individual skill development and evolve into game play as the program progresses.

**Dates:** Thursdays and Saturdays,  
April 30th-May 23rd

**Location:** Lawton Ballfield (Portage Fairgrounds)

### Ages & Times:

- Kindergarteners- 4:15-4:55pm on Thursdays / 9:00-9:40am on Saturdays
- 1<sup>st</sup> & 2<sup>nd</sup> Graders- 5:00-5:45pm on Thursdays / 9:45-10:30am on Saturdays
- 3<sup>rd</sup>, 4<sup>th</sup>, 5<sup>th</sup> Graders- 5:50-6:35pm on Thursdays / 10:35-11:20am on Saturdays

**Fee:** \$40 Residents / \$50 Non-Residents

**Registration:** March 23<sup>rd</sup> thru April 24<sup>th</sup>

*\*\*Participants can opt to play in the next older group, if parents prefer*

## TUMBLING

Our tumbling classes focus on building strength, coordination, and confidence through rolls, handstands, cartwheels, backbends, and more. Perfect for beginners and developing athletes looking to master foundational tumbling skills in a fun and supportive environment. Participants will work at their own pace and level, and will receive individual feedback and instruction.

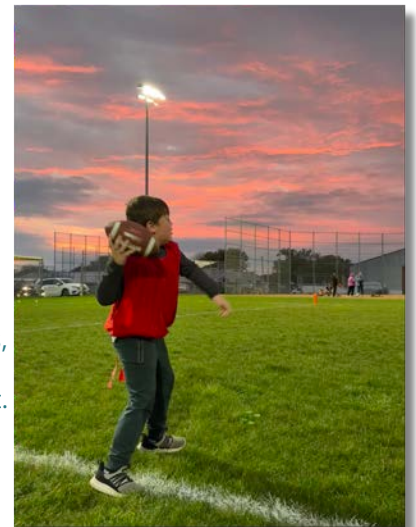
**Dates:** Tuesdays: Session 1- June 9 - June 30  
Session 2- July 7th - July 28th

**Times:** **Ages 6-7** 2:25-2:55pm

**Ages 8-14** 3-3:30pm or 3:35-4:05pm

**Location:** Park & Rec Community Room

**Cost:** \$25 Residents / \$35 Non-Residents



**BE SURE TO CHECK OUT  
OUR NEW PRESCHOOL  
OPEN PLAY PROGRAM!  
MORE INFO CAN BE  
FOUND ON PAGE 6!**

# SUMMER PROGRAMS

## TOT T-BALL

This program will introduce baseball and softball to future All-Stars! Players will learn the basics of fielding, catching, throwing, hitting, and running the bases. We'll work on individual skill development, as well as play scrimmage games. This program is about getting kids involved, learning, and having fun!

**Dates:** Tues/Thurs, June 9- June 23 (June 25 will be used as a make-up date)

**Fee:** \$35 Residents / \$45 Non-Residents

**Time Options:** **Group 1-** 3:30-4:15pm

**Group 2-** 4:20-5:05pm

**Group 3-** 5:10-5:55pm

**Location:** Lawton Field & Siegel Field (Portage Fairgrounds)

**Ages:** 4-5 year olds

**Max:** 20 per group



## TOT SOCCER

We are excited to teach kids how much fun soccer can be! We'll introduce the basic skills such as kicking, passing, throw-ins, and teach them how games are played. Players will work on individual skill development and play scrimmage games throughout the program.

**Dates:** Tues/Thurs, July 7- July 28 (July 30 will be used as a make-up date)

**Fee:** \$35 Residents / \$45 Non-Residents

**Time Options:** **Group 1-** 3:30-4:15pm

**Group 2-** 4:20-5:05pm

**Group 3-** 5:10-5:55pm

**Location:** Lawton Field & Siegel Field (Portage Fairgrounds)

**Ages:** 4-5 year olds

**Max:** 20 per group



## TOT BASKETBALL

Our Tot Basketball program is the perfect chance for kids to learn and expand their basketball skills in a fun environment- outdoors in a park! Players will learn and practice basic skills, as well as play fun mini-games and scrimmages.

**Dates:** Tues/Thurs, August 4- August 25

(August 27 will be used as a make-up date)

**Fee:** \$35 Residents / \$45 Non-Residents

**Time Options:** **Group 1-** 3:30-4:15pm (4-6 year olds)

**Group 2-** 4:20-5:05pm (4-6 year olds)

**Group 3-** 5:10-5:55pm (7-8 year olds)

**Max:** 20 per group

**Location:** Collipp-Worden Park  
Basketball Courts

## YOUTH SOCCER CAMP

This program will focus on intermediate skills and drills for soccer players. The first portion of the program will be dedicated to individual skill development, but will evolve into more advanced drill work and gameplay.

**Dates:** Tues/Thurs, July 7- July 28

(July 30 used as make-up date)

**Times:** 1:30-2:15pm (6-7 year olds)

2:30-3:15pm (8-10 year olds)

**Fee:** \$35 Residents / \$45 Non-Residents

**Min/Max:** 15/24 per group

**Location:** Veterans Memorial Fields (Portage Fairgrounds)

## PORTAGE YOUTH BASEBALL & SOCCER

For those interested in traditional Youth Baseball leagues for ages 6-14, please check out Portage Youth Baseball at [portageyouthbaseball.org](http://portageyouthbaseball.org). They offer a variety of levels, including T-Ball, Coach Pitch, in-house leagues, and traveling tournament teams. For those interested in traditional Youth Soccer leagues, please check out the Portage Youth Soccer Association at [portageyouthsoccer.org](http://portageyouthsoccer.org)

REGISTRATION FOR SUMMER PROGRAMS OPENS ON APRIL 15<sup>TH</sup> AT NOON!

# SUMMER PROGRAMS

## SUMMER DAY CAMP

Our popular **Playground Program** has now transitioned to the Portage School District as part of their Summer School offerings. This new program, titled Summer Day Camp, will be run through the Portage School District Summer School program, with the assistance of Park & Rec Staff. This new partnership will help improve this program by providing indoor space throughout the summer, as well as an earlier start time each day!

**Dates:** June 8<sup>th</sup> through July 31<sup>st</sup>

**Times:** Mon-Thurs 8am-3pm  
Fri 8am-Noon

**Location:** Mornings at John Muir Elementary,  
Afternoons at Collipp-Worden Park

**Registration-** All registrations for this program will go through the Portage School District's Summer School program. Information will be shared with all students in the district, as well as available on the district's website in early March.

## PRESCHOOL OPEN PLAY

Get ready to jump, roll, and play! Our Preschool Open Play program offers a fun and safe environment for little movers to explore and build early coordination, balance, and motor skills. With age-appropriate tumbling equipment, obstacle courses, and creative play stations, kids will enjoy active, hands-on learning through movement.

This parent-supervised Open Play encourages social interaction, physical activity, and confidence—all while having a blast! Whether they're climbing, crawling, or practicing their first forward roll, every child can participate at their own pace. Perfect for toddlers and preschoolers who love to move!

**Ages:** 2-5 year olds

**Fee:** \$4 Resident / \$5 Non-Resident (per child, per day)

**Dates & Times:** Varies by month- check our website or Facebook page!

**Location:** Portage Park & Rec Community Room (401 Cemetery Rd)



## MIDDLE SCHOOL PICKLEBALL CAMP

Join us for a fun and active three-day pickleball camp designed specifically for 6<sup>th</sup>–8<sup>th</sup> grade boys and girls! Whether your child is brand new to the game or already loves playing, this camp will build skills, confidence, and game knowledge in a positive and encouraging environment. Camp is led by Pam Klein, who brings over 10 years of pickleball experience, including competing at the professional level and has won multiple medals at the US Open.

Campers will learn proper grip and paddle control, forehand and backhand strokes, serving and returning serves, dinking and net play, court positioning and movement, basic strategies, and official rules of play. Each camper will receive a pickleball, daily prizes and snacks, as well as structured practices and supervised gameplay. Participants should bring their own paddle and water bottle each day. Please contact our department if you will need to borrow a paddle!

**Dates:** June 1 & 2 (June 3 used as a make up date)

**Location:** Pine Meadow Park (865 Hamilton Street)

**Fee:** \$35 for Residents / \$45 for Non-Residents

**Time:** 9am-11am

**Ages:** 6<sup>th</sup> - 8<sup>th</sup> graders



REGISTRATION FOR SUMMER PROGRAMS OPENS ON APRIL 15<sup>TH</sup> AT NOON!

# SUMMER PROGRAMS

## SUMMER DANCE PROGRAM

Perfect for beginners, those wanting to see if dance is the right fit, or anyone excited to try something new! Participants will explore a variety of dance styles, learning a little of everything to help them become well-rounded, confident movers. Along the way, dancers will build balance, coordination, rhythm, flexibility, and strength in a fun and supportive environment. This class encourages creativity, teamwork, and self-expression while helping dancers grow both on and off the dance floor.

Dance shoes are recommended but not required. Each class will learn a choreographed routine to proudly perform at National Night Out on August 4th — a fun opportunity to showcase all their hard work for family and friends!

**Dates:** Tuesday's June 9 - August 4

**Times:** 4:30-5 PM (Ages 3-4)

5:05 - 5:35 PM (Ages 5-6)

5:40-6:10 PM (Ages 7-8)

**Location:** Park & Rec Community Room

**Cost:** \$35 for Residents / \$45 for Non-Residents



## SUMMER CHEER PROGRAM

Get ready to bring the spirit this summer! Our Portage Summer Cheer Program is designed for athletes of all skill levels who want to build confidence, improve technique, and have FUN in a positive, high-energy environment.

Participants will learn: Sideline cheers and crowd-leading skills, Proper jump technique and jump combinations, Tumbling fundamentals, Safe stunting basics, and teamwork skills

Throughout the program, athletes will work on motion technique, timing, performance quality, and overall confidence. We'll focus on strong fundamentals while encouraging leadership, sportsmanship, and team bonding.

At the end of the session, athletes will put everything they've learned together into a mini "halftime routine" that includes cheers, jumps, stunts, and tumbling to perform for family and friends!

Whether your athlete is brand new to cheer or looking to sharpen their skills, this program is the perfect way to grow, learn, and shine this summer.

**Dates:** Wednesday's June 10 - July 29

**Grades:** K-8<sup>th</sup>

**Cost:** \$30 for Residents / \$40 for Non-Residents

**Time:** 4:45-5:30 PM

**Location:** Portage Football Field



**COMPETITIVE CHEER TEAMS ARE NOW RUN THROUGH THE JR. WARRIORS CHEER ORGANIZATION. FOR MORE INFORMATION, PLEASE VISIT THEIR WEBSITE AT [WWW.JRWARRIORSCHEER.COM](http://WWW.JRWARRIORSCHEER.COM)**

## SUMMER DANCE INTENSIVE

Our Summer Dance Intensive is designed for the dedicated dancer who is ready to push past their comfort zone and elevate their training. This focused program is built to strengthen technical foundation while advancing overall skill level, flexibility, control, and performance quality.

Dancers will receive detailed technical corrections and individualized feedback to help refine alignment, body awareness, and execution. Emphasis is placed on clean technique, stronger turns, higher and more controlled leaps, improved jump mechanics, and increased extension and flexibility. In addition to skill development, dancers will work on strength and conditioning to build power, stability, and injury prevention habits that support long-term growth.

This program is ideal for motivated dancers with prior experience who are eager to grow, committed to working hard, and ready to take meaningful steps forward in their training. Participants will leave stronger, more flexible, technically refined, and more confident in their abilities.

**Dates:** June 23, 24, 25

**Age:** 8+

**Cost:** \$35 Resident / \$45 Non-Resident

**Times:** 12 PM - 1:30 PM

**Location:** Park & Rec Community Room



**REGISTRATION FOR SUMMER PROGRAMS OPENS ON APRIL 15<sup>TH</sup> AT NOON!**

# SUMMER PROGRAMS

## WARRIOR SPIRIT CRAFT CORNER

Join the PHS Cheer Coaches with a morning of creating your own Warrior Spirit gear! Participants will make their own cheer bow, megaphone, and t-shirt!

**Date:** Wednesday, July 29th

**Ages:** 5-14

**Times:** 10:00am-11:30am

**Fee:** \$10

**Location:** Park & Rec Community Room

**Min/Max:** 5/40



## ADDITIONAL ENRICHMENT PROGRAMS

Be sure to pay attention to our Facebook page and website throughout the summer for more craft and enrichment programs! These programs may include Slime Making, Tie-Dyeing, and lots more!



## BREWERS GAME

Join our Group Ticket package to watch the Milwaukee Brewers battle the Los Angeles Dodgers over Memorial Day Weekend! Tickets will go fast for this exciting rematch of the National League Championship Series in 2025, so get your tickets today! Tickets are located in the Loge Infield Level. Transportation is not included.

**Date:** Sunday, May 24th

**Game Time:** 1:10pm

**Location:** American Family Field (Milwaukee)

**Price per Ticket:** \$50.00



## LOOKING FOR MORE?

Looking for more youth sports options? Check out these Youth Organization websites for more Youth Sports in the Portage area!

- **Youth Soccer**– [portageyouthsoccer.org](http://portageyouthsoccer.org)
- **Girls Basketball**– [portagegirlsbasketball.sportngin.com/](http://portagegirlsbasketball.sportngin.com/)
- **Boys Basketball**– [portageboyshoopsclub.com](http://portageboyshoopsclub.com)
- **Baseball**– [portageyouthbaseball.org](http://portageyouthbaseball.org)
- **Girls Fastpitch Softball**– [portageyouthsoftball.org](http://portageyouthsoftball.org)
- **Tackle Football**– [portagewarriorfb.com](http://portagewarriorfb.com)
- **Wrestling**– [portageyouthwrestlingclub.sportngin.com/home](http://portageyouthwrestlingclub.sportngin.com/home)
- **Hockey**– [thunderbirdyouthhockey.com](http://thunderbirdyouthhockey.com)
- **Competitive Cheerleading**– [jrwarriorscheer.com](http://jrwarriorscheer.com)
- **Archery**– [portagewiarchery.wixsite.com/portage-archery-club](http://portagewiarchery.wixsite.com/portage-archery-club)
- **Curling**– [portagecurling.com/](http://portagecurling.com/)

## HAVE A NEW PROGRAM OR CLASS IDEA?

If you ever have an idea or suggestion for a new program, class, event, or anything you'd like to see us offer, please reach out! We are always open for new ideas and gladly welcome community input!

REGISTRATION FOR SUMMER PROGRAMS OPENS ON APRIL 15<sup>TH</sup> AT NOON!

# SPORTS CAMPS

We are proud to offer these partnership camps with the Portage High School Athletic Department. Each camp is designed to introduce and teach kids in the community how to play and improve in each sport. Participants are coached by High School coaches and players, and a portion of each registration fee goes directly to that team as a fundraiser.

## GIRLS BASKETBALL CAMP

Join us for a FUN summer basketball camp led by the Portage Warrior Coaching Staff and High School Players!

**Dates:** June 8, 9, 10

**Ages & Times:** Girls Entering 3<sup>rd</sup>, 4<sup>th</sup>, 5<sup>th</sup> Graders- 11:30am-1:00pm  
Girls Entering 6<sup>th</sup>, 7<sup>th</sup>, 8<sup>th</sup> Graders- 9:00am-11:00am

**Fee:** \$18

**Location:** Portage High School Gym

## TRACK & FIELD / CROSS COUNTRY CAMP

Participants will work with Portage High School track and cross country athletes and coaches on the following events: sprints, distance, relays, hurdles, shot put, discus, long jump, and high jump. Event options vary by age group. Participants have the option to participate in a mini track meet in the evening on Thursday, July 30th.

**Dates:** July 28, 29, 30

**Fee:** \$23 (includes camp t-shirt)

**Ages & Times:** 3<sup>rd</sup>, 4<sup>th</sup>, 5<sup>th</sup> Graders- 9am-10am  
6<sup>th</sup>, 7<sup>th</sup>, 8<sup>th</sup> Graders- 10am-11am

**Location:** Portage High School Track



## VOLLEYBALL CAMP

Participants will work with Portage High School Volleyball coaches and players to develop their skills and teamwork in a fun and encouraging atmosphere!

**Dates:** August 11, 12, 13

**Fee:** \$18

**Location:** Portage High School Gym

**Ages & Times:** 3<sup>rd</sup> & 4<sup>th</sup> Graders- 8am-9am

5<sup>th</sup> & 6<sup>th</sup> Graders- 9am-10am

7<sup>th</sup> & 8<sup>th</sup> Graders- 10am-11am

## TENNIS CAMPS

Join the Portage High School Tennis team and coaches for these fun and instructional youth tennis camps! Kids will learn the basics of tennis and play matches with the help of experienced coaches and players.

**Dates:** Camp #1- June 8, 9, 10, 11

Camp #2- July 6, 7, 8, 9

**Location:** Portage Middle School Tennis Courts

**Fee:** \$18

**Ages & Times:** 5-7 Year Olds- 5:00-5:45pm / 8-10 Year Olds- 6:00-6:45pm / 11-14 Year Olds- 7:00-7:45pm

## ADDITIONAL CAMPS COMING SOON!

The following camps will be announced soon- we are just finalizing the details and dates! Pay attention to our website or Facebook page for more information on these camp:

▶ ARCHERY

▶ BASEBALL

▶ SOCCER



REGISTRATION FOR SUMMER PROGRAMS OPENS ON APRIL 15<sup>TH</sup> AT NOON!

09

# ADULT PROGRAMS

## PICKLEBALL

### Dust Off Your Paddle Mini Camp

Ready to shake off the winter rust and get back into outdoor play? This three-day mini camp is designed for players rated 2.5 and above who want to refresh fundamentals, sharpen consistency, and head into summer feeling confident and competitive. Camp is led by Pam Klein, who brings over 10 years of pickleball experience, including competing at the professional level and has won multiple medals at the US Open.

Over 3 afternoons, we will review and drill key skills such as:

- Serve and return consistency
- Third shot strategy (drive and drop options)
- Dinking with purpose and control
- Transition zone footwork and positioning
- Net play and point construction
- Defensive resets and shot selection
- Court awareness and doubles communication

Each session will combine focused drills with guided play so you can immediately apply what you're learning. On the final day, we'll host a mini round-robin tournament, with live coaching and instruction during play to reinforce strategy, shot selection, and court positioning in real time. Come ready to move, compete, laugh, and start the outdoor season strong!

### Pickleball 101 Beginner Mini-Camp

Curious about pickleball or ready to finally give it a try? This fun and welcoming mini-camp is perfect for total beginners! We'll cover all the basics in a relaxed, supportive environment — no experience needed. You'll learn fundamental skills like how to hold the paddle, proper court positioning, serving, returning, and keeping a rally going. We'll also introduce key concepts like scoring, the kitchen (non-volley zone), and basic game strategy so you can jump into play with confidence.

Come ready to move, laugh, and learn a new game that's easy to pick up and hard to put down!

**Dates:** May 18<sup>th</sup>, May 20<sup>th</sup>, May 21<sup>st</sup> (May 22<sup>nd</sup> will be used as a rain date)

**Time:** 9am-11am

**Location:** Pine Meadow Park (865 Hamilton Street)

**Cost:** \$40 Residents / \$50 Non-Residents    **Max:** 10 players

### Pickleball Open Play

Come join in on the Pickleball craze this year! If you are looking for other Pickleball Players to play with, we recommend signing up with Playtime Scheduler at [www.playtimescheduler.com](http://www.playtimescheduler.com). It is a free website that allows you to see when others will be playing at the courts, and allows you to sign up to play with others.

Courts are free to use and open to the public at all times, unless otherwise noted on the court entrances. Courts may be reserved at times for Park & Rec Programming. At this time, we are not reserving courts for private groups or closed play, so please make sure you are sharing the courts!

## PORTAGE PUBLIC LIBRARY

The Portage Public Library offers a wide variety of classes and programs for all ages! Be sure to stop by the library or visit their website at [www.portagelibrary.us](http://www.portagelibrary.us) to see everything they have to offer!

**Address:** 253 W. Edgewater Street

**Phone:** 608-742-4959

### Dust Off Your Paddle Camp Information

- For 2.5+ players
- May 4<sup>th</sup>, 5<sup>th</sup>, and 6<sup>th</sup> (Mon, Tues, Wed)
- Noon-2pm each day
- \$40 for Residents, and \$50 for Non-Residents
- Maximum 14 players



# ADULT PROGRAMS

## STRENGTH, STRETCHING, AND STILLNESS

Looking to boost your energy, improve flexibility, and find a little more "calm" in your week? Join our popular Strength, Stretch, & Stillness class!

Specifically designed for women over 40 (though all women 18+ are welcome!), this 60-minute class is the ultimate all-in-one workout for healthy aging. We combine strength training to support bone health, targeted stretching for mobility, and guided meditation to hit the reset button on stress.

After age 40, we can lose up to 8% of muscle mass per decade. Pam's supportive style helps you work at your own pace while giving your body exactly what it needs to stay strong and centered.

**Dates:** Monthly schedules are released on our website and Facebook page

**Location:** Park & Rec Community Room

**Fee:** \$4 Residents / \$5 Non-Residents

(per class- register for whichever dates work for your schedule!)



## WOMEN'S WELLNESS RETREAT

### NOURISH, RESTORE, RENEW

Spring reminds us that growth happens quietly and steadily. This retreat is designed to help you reconnect with your inner strength through gentle movement, guided mindfulness, personal reflection, and supportive community. It is a chance to set intentions and step into the summer with clarity and purpose. Together we create space for balance, clarity, and renewed energy.

If this sounds like something you'd enjoy, we encourage you to register soon as these retreats tend to fill very quickly.

**Dates:** Sunday, May 17<sup>th</sup>

**Location:** Portage Park & Rec Community Room (401 Cemetery Rd)

**Fee:** \$40 Resident / \$50 Non-Resident

**Time:** Noon-2:30pm

**Registration Dates:** March 23<sup>rd</sup> thru May 10<sup>th</sup>

## ADULT SOFTBALL (MEN'S LEAGUE)

Come join our Monday Night Men's League! This is a recreational, slow-pitch softball league. League Rules and Registration Packets can be found on our website beginning April 1st. Teams from last year will be contacted prior to April 1st and will have the first opportunity to register. This league is limited to 8 teams, and we will accept the first 8 teams to turn in their Registration Packet and Team Fee.

**Dates:** Monday Nights, beginning mid- May and ending mid-August

**Times:** Games will begin between 6pm-9pm

**Location:** Lawton Ballfield (Portage Fairgrounds)

**Fee:** \$300 per team

**Registration Deadline:** April 17<sup>th</sup>



## HAVE A NEW PROGRAM OR CLASS IDEA?

If you ever have an idea or suggestion for a new program, class, event, or anything you'd like to see us offer, please reach out! We are always open for new ideas and gladly welcome community input!

# COMMUNITY EVENTS

## NATIONAL NIGHT OUT

National Night Out is an opportunity to enjoy a fun night in the park to enhance the relationship between neighbors and law enforcement, while bringing back a true sense of community! Local Police and Sheriff's representatives will be in the park playing games, handing out safety information, and helping to create a positive relationship between our community and law enforcement.

We'll have food and snacks available, multiple raffles, demonstrations, as well as tons of local businesses and organizations handing out giveaways, promotional items, and more! This has been a HUGE community event with thousands of attendees the past few years, so come out and join in on the fun in 2026!

**Date:** Tuesday, August 4, 2026  
**Time:** Evening  
**Location:** Collipp-Worden Park



## CANAL DAYS

Canal Days is returning to downtown Portage and the summer parade is BACK! It's going to be a day full of community, energy, and hometown pride. Come join in on the FREE fun! Hosted by the Downtown Business Improvement District.

**Date:** Saturday, June 6th



## 4TH OF JULY FIREWORKS

The *Portage Festival Foods Fireworks Celebration* will be held on the north side of Portage, just off Gunderson Drive. We encourage you to enjoy the show from areas nearby, including the parking lots of Festival Foods, and other nearby businesses.

**Time:** 9:30pm      **Date:** Friday, June 26th



## COLUMBIA COUNTY FAIR

Join us as we celebrate the 175<sup>th</sup> Columbia County Fair this summer! This year's theme is "Still Going Strong" and will take place July 29th-August 2<sup>nd</sup> at the Columbia County Fairgrounds in Portage. Questions about the Fair can be directed to the Columbia County Fair Board by visiting [ColumbiaCountyFairWI.org](http://ColumbiaCountyFairWI.org), emailing them at [information@columbiacountyfairwi.org](mailto:information@columbiacountyfairwi.org) or calling 608-697-5043



# COMMUNITY EVENTS

## TASTE OF PORTAGE

Come join the fun at this annual event hosted by the Portage Chamber of Commerce! Taking place in downtown on Friday night and Saturday, there will be live music, food, drinks, kids' activities, an art and craft show, and a classic car show. Events take place at Market Square Parking Lot, Cook Street, and Dewitt Street.

**Dates:** August 28<sup>th</sup> & 29<sup>th</sup>

For more details, visit <https://www.portagewi.com/>



## TASTE OF PORTAGE HALF MARATHON & 5K

You will take a beautiful run through Portage, past several of our community parks and the paved Levee path on the Wisconsin River. Join us after the race for a downtown post-race block party and awards ceremony at Taste of Portage.

**Date:** August 29<sup>th</sup>

For more details, visit <https://www.portagewi.com/>



## PORTAGE FARMERS MARKET

The Portage Farmers Market is held every Thursday afternoon (Noon-5pm) from May through October, at Commerce Plaza in downtown Portage. The Market features homegrown produce items, homemade items, and handcrafted items.



# AROUND PORTAGE

*Check out these additional recreation opportunities around Portage!*

## MADISON COLLEGE CAMPS & CLASSES

See below for a TON of education classes through Madison College- Portage Campus:

### Habits of Highly Effective People

In this hands-on course, you'll learn to focus on what matters most, feel more satisfied with your daily accomplishments, and live each day with greater purpose and balance.  
Class #67290 | March 10 & 11 | 8:00am-4:00pm

### Part 1: LSS Yellow Belt Basics

Start your Lean Six Sigma journey by learning how to improve processes and reduce waste!  
Class #67135 | March 26 - April 16 | 8:00am-12:00pm

### Part 2: LSS Tools In Action

Build on your LSS foundation by applying practical tools to real-world problems.  
Class #67136 | April 23 - May 14 | 8:00am-12:00pm

### Puppy Kindergarten

Puppies will learn basic manners and obedience commands. The class will learn the secrets of successful puppy training.  
Class #64646 | April 8 - May 13 | 5:30pm-6:30pm

### Dog Agility

The dog and handler will be taught agility through positive motivational training methods.  
Class #64548 | April 9 - May 14 | 5:30pm-6:30pm

### Dog Obedience

The instructor will teach the handlers how to train their dog for a lifelong commitment to basic manners and obedience.  
Class #64648 | April 8 - May 13 | 6:30pm-7:30pm

### Command & Survival: Survive and Thrive 90-Day Readiness

Learn to build the essential skills and mindset needed to thrive in any emergency situation. Participants will learn practical survival techniques.  
Class #67293 | April 14 - May 5 | 5:00pm-8:00pm

### Art Welding

Unleash your creativity in this introductory class! Open to all skill levels, you'll master the basics of welding and plasma cutting while crafting a garden sculpture or seasonal decor.  
March 26 - April 30 | 5:00pm-8:00pm | \$247.06 per participant

### Intro to Meditation

Meditation has many benefits- but how do you do it? This class explores techniques to make meditation effective and enjoyable. Through explanations and guided practice, you'll quickly learn the basics.  
Class #11988 | October 7 - October 28 | 6:00pm - 7:30pm



Madison College - Portage Campus  
330 W. Collins Street, Portage, WI 53901  
portageoffice@madisoncollege.edu  
608-745-310

Register at  
[madisoncollege.edu/academics/professional-continuing-education/portage](https://madisoncollege.edu/academics/professional-continuing-education/portage), or by scanning the QR Code



# AROUND PORTAGE

Check out these additional recreation opportunities around Portage!

## ICE AGE TRAIL

One of the best outdoor experiences is right here in Portage, Wisconsin. The Ice Age National Scenic Trail is closer than you think!

One of only 11 National Scenic Trails in the country, the Ice Age Trail is a 1,200-mile footpath contained entirely within the state of Wisconsin. Ancient glaciers carved the path through rocky terrain, open prairies, and peaceful forests. Now, day hikers, backpackers, and outdoor lovers of all ages rely on the Ice Age Trail for a place to unplug, relax, and enjoy nature.

As an official Ice Age Trail Community with the Ice Age Trail Alliance, Portage is a hiker destination for outdoor enthusiasts and promotes the Ice Age Trail for community use as well. The recently improved Portage Segment takes hikers right through the city, walking in the footsteps of explorers. The connecting route from the Sauk County line to the City of Portage goes through the Pine Island Wildlife Refuge and is a relaxing walk with little traffic. Keep an eye out for the dozens of species of birds that live.

Check out the *Ice Age Trail Explorer Backpack at the Portage Library*. The backpack contains everything you need to interact with and learn about Wisconsin's flora and fauna while hiking the Ice Age National Scenic Trail!

As you seek out the next yellow blaze, deepen your children's connection to nature using Wisconsin wildlife identification guides. They'll gain a closer look at critters through binoculars, and learn how to navigate the Ice Age Trail with the atlas, guidebook, and compass.

The Explorer Backpacks were made possible with support from the Ice Age Trail Alliance, [National Park Foundation](#) and [Granite Gear](#), who generously supplied the backpacks. Backpacks are available for check-out at the Portage Public Library.

Visit the Ice Age Trail Alliance's website to learn more, [icegetrail.org](http://icegetrail.org).



## ADRC- COLUMBIA COUNTY

The Aging and Disability Resource Center (ADRC) is your bridge to support for information and assistance on issues affecting older adults and people with disabilities. We provide free, unbiased support and resources to everyone, regardless of income."

### ▶ POWERFUL TOOLS FOR CAREGIVERS (ADRC)

Whether you provide care for a spouse, partner, parent, or friend, at home or in a care facility, whether down the block or miles away, yours is an important role. This course is for caregivers like you! These classes help caregivers take better care of themselves while caring for others.

**Dates:** Tuesdays, April 7<sup>th</sup> thru May 12<sup>th</sup>

**Location:** Portage Park & Rec Community Room

**Fee:** \$25 suggested contribution

**Times:** 10am-11:30am

**RSVP (required):** 608-742-9233

*\*This program is run through the Columbia County ADRC. Please contact them to register and with any questions. Phone number listed above.*



# MEMORIAL PROGRAM

Our Memorial Program gives you the opportunity to donate a tree, bench, or brick in celebration, honor, or memory of a person or event. Trees and benches will be placed in the Portage Park system, and the Memorial Bricks are for veterans and will be placed at Blue Star Park.

## Memorial Trees

Work with our department to select an approved tree and find a suitable location in one of our parks. Customized plaque included.

**Cost: \$500**

## Memorial Benches

Work with our department to find a location in our park system for your bench. Some restrictions may apply. Customized plaque included.

**Cost: \$2500**

## Memorial Bricks

All Memorial Bricks will be placed at Blue Star Park. This program is reserved for veterans. Brick engravings can be customized.

**Cost: \$160**

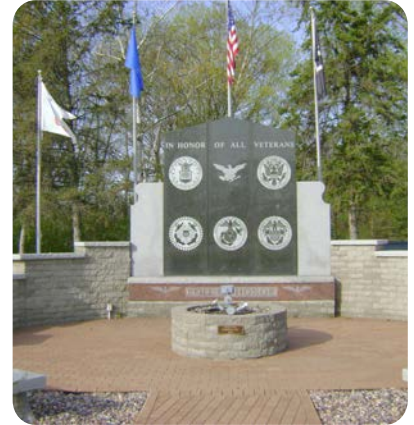
[Click here](#), or scan the QR code to find our Memorial Tree, Bench, and Brick Order Forms.



Sample Memorial Tree



Sample Memorial Bench



Blue Star Park Memorial

# WINTER STORAGE

Looking for a place to store your boat, RV, camper, or vehicle over the winter? The City of Portage offers indoor and outdoor storage at the Portage Fairgrounds each winter.

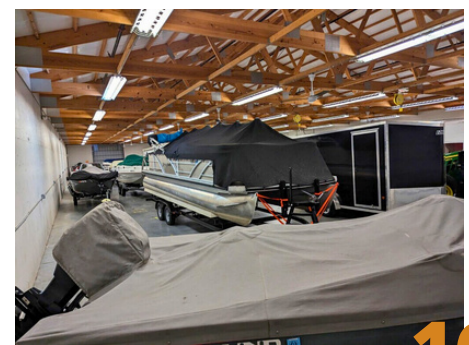
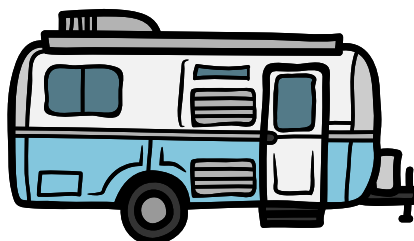
**Move In**- Late October or Early November. Exact dates will be announced in August.

**Rates**- Resident of Portage: Indoor=\$15/foot      Outdoor=\$10/foot  
Non-Residents: Indoor=\$20/foot      Outdoor=\$15/foot

**This is a one-time up-front fee paid via check at Move-In. No monthly fees. The Move-Out date**

**will be scheduled for early April 2027 and will be announced prior to Move-In.**

For more information visit [portage.recdesk.com](http://portage.recdesk.com) or call 608-742-2178



[www.portage.recdesk.com](http://www.portage.recdesk.com)

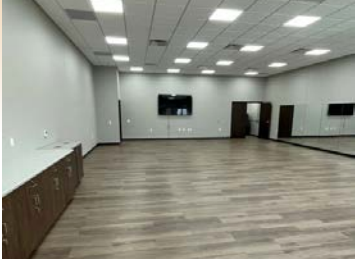
# FACILITY RENTALS

Reserve any shelter at [portage.recdesk.com](http://portage.recdesk.com) under the 'Facilities' tab.  
Or stop in the Portage Park & Recreation Department at 401 Cemetery Rd, Portage, WI

## COMMUNITY ROOM

Rental Fee- \$150 R/\$200 NR

Looking for an indoor space for your next event? We've got you covered! Our Community Room is perfect for birthday parties, graduation parties, reunions, meetings, and more. Tables and seating for 60 are included, along with counter space and outlets for food. Configure the setup any way you'd like! Reservations can be made 365 days in advance.



## TIER ONE SHELTERS

Monday-Friday \$45 R/\$70 NR  
Saturday/Sunday \$55 R/\$80 NR

Collipp-Worden #1



- 226 W. Slifer St**
- 14 picnic tables
  - Electricity
  - Flush Restrooms
  - Charcoal Grill
  - Disc Golf Course
  - Basketball, Volleyball, and Tennis Courts
  - Playground

Sunset



- 1217 W Pleasant St**
- 12 picnic tables
  - Electricity
  - Flush Restrooms
  - Charcoal Grills
  - Playground
  - Scenic Overlook of Wisconsin River

Silver Lake



- 522 Silver Lake Dr**
- 6 picnic tables
  - Electricity
  - Flush Restrooms
  - Playground
  - Beach swimming area

Pauquette Beasley Pavillion



- 815 W. Cook St**
- 12 picnic tables
  - Electricity
- \*Please see Pauquette Shelter #1 for additional park amenities.

Pauquette #1



- 900 W Conant St**
- 7 picnic tables
  - Electricity
  - Basketball Court
  - Playground
  - Flush Restrooms
  - Floral Garden

Goodyear #1



- 920 Dewitt St**
- 6 picnic tables
  - Electricity
  - Splashpad
  - Playground
  - Flush Restrooms
  - Skatepark

## TIER TWO SHELTERS

Monday-Friday \$35 R/\$60 NR  
Saturday/Sunday \$45 R/\$70 NR

Collipp-Worden #2



- 301 W Slifer St**
- 5 picnic tables
  - Electricity
  - Charcoal Grill
- \*Please see Collipp-Worden Shelter #1 for additional park amenities

Pauquette #2



- 900 W Conant St.**
- 6 picnic tables
  - Electricity
- \*Please see Pauquette Shelter #1 for additional park amenities

## TIER THREE SHELTERS

Monday-Friday \$25 R/\$50 NR  
Saturday/Sunday \$35 R/\$60 NR

Pine Meadow



- 865 Hamilton St**
- 3 picnic tables
  - Green Space
  - NEW Playground in 2025
  - Pickleball Courts
  - Portable Restroom

Pauquette Gazebo



- 900 W. Conant St**
- Great Wedding and photograph venue
  - Located next to Bridal Pond at Pauquette Park
- \*Please see Pauquette Shelter #1 for additional park amenities

Sanborn



- 922 W. Franklin St**
- 3 picnic tables
  - Green Space
  - Playground
  - Basketball Court

Woodridge



- 424 Winnebago St**
- 3 picnic tables
  - Playground

Lincoln



- 404 E Carroll St**
- 2 picnic tables
  - Playground
  - Basketball Court

Cattail



- 510 W. Burns St**
- 1 picnic table
  - Green Space
  - Small playground equipment

# 2025 SPONSORS

Shelly Cibulka (Allstate) • Riley Kubatzke (American Family Insurance) • Sheila Link (American Family Insurance) • Arbor Green • Aspirus • Blau Chiropractic • Bremner Granite • Cardinal FG • Collectors Choice Coins & Collectables • Community Bank of Portage (BWD) • Compass Counseling LLC • Cordell's Automotive • Country Plumber • Crawford Oil • Culvers • Cutting Edge Insurance • Dunkin • Josh Vehring (Edward Jones) • Klay Vehring (Edward Jones) • Electric 1 • Flower Company • Forever Yours Jewelry • Galley Studios • General Engineering Company • Grande Cheese Company • Gumz Farms • Hair Sensations • Hart & Olson Family Dentistry • Hillestad Heating • Johnson Chiropractic • Kiwanis Club of Portage • Knight Barry Title Services • Kruger Family Industries • Lynn Holdings • MachineLab Fitness • McReath Orthodontics • Meigs Transport • Midwest Dental • Natures Way Landscaping • New Life Physical Therapy • Pflanz Mendrala Funeral Home • Pizza Ranch • Portage Furniture Store • Portage Lions Club • Portage Rotary Club • Portage State Bank • Rhyme • Roth Professional Solutions • Sean Malone (State Farm) • Seubert Family Dentistry • Smiley Law Office • Summit Credit Union • TRICOR LLC- Don Rick Insurance • Two Rivers Signs • VFW Post 1707 • WCCU (Westby Co-Op Credit Union) • Wieser Concrete • Wisconsin River Title Consultants • Zimmerman Plumbing

*Thank you!*